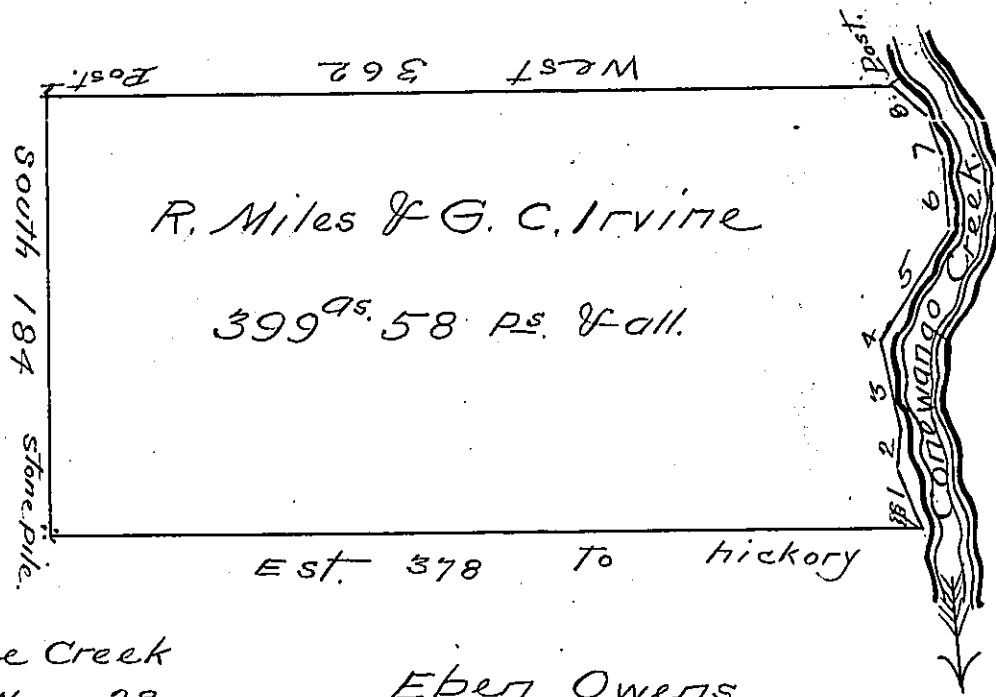


John Rees.



Courses up the Creek

1	N.	22	W.	28
2	N.	—	—	16
3	N.	11	W.	40
4	N.	21	E.	11
5	N.	34	E.	12
6	N.	5	W.	30
7	N.	18	W.	18
8	N.	56	W.	21 To Post.

Eben Owens.

Draft of A Tract of Land situate in Conewango Township Warren County Containing three hundred & ninety ^{nine} acres & fifty eight perches & allowance surveyed on settlement and improvement (formerly made by Jacob Goodwin) for Robert Miles and Guy C. Irvine now in ^{their} possession surveyed the 15th Feby. A. D. 1828

John Andrews D.S.

Gab^L. Hiester Esq^t }
Surveyor General - }

Warren County

IN TESTIMONY that the above is a copy of the original remaining on file in the Department of Internal Affairs of Pennsylvania, made conformably to an Act of Assembly approved the 16th day of February, 1833, I have hereunto set my Hand and caused the Seal of said Department to be affixed at Harrisburg, this Seventeenth day of May 1905.

Samuel R. Brown
Secretary of Internal Affairs.